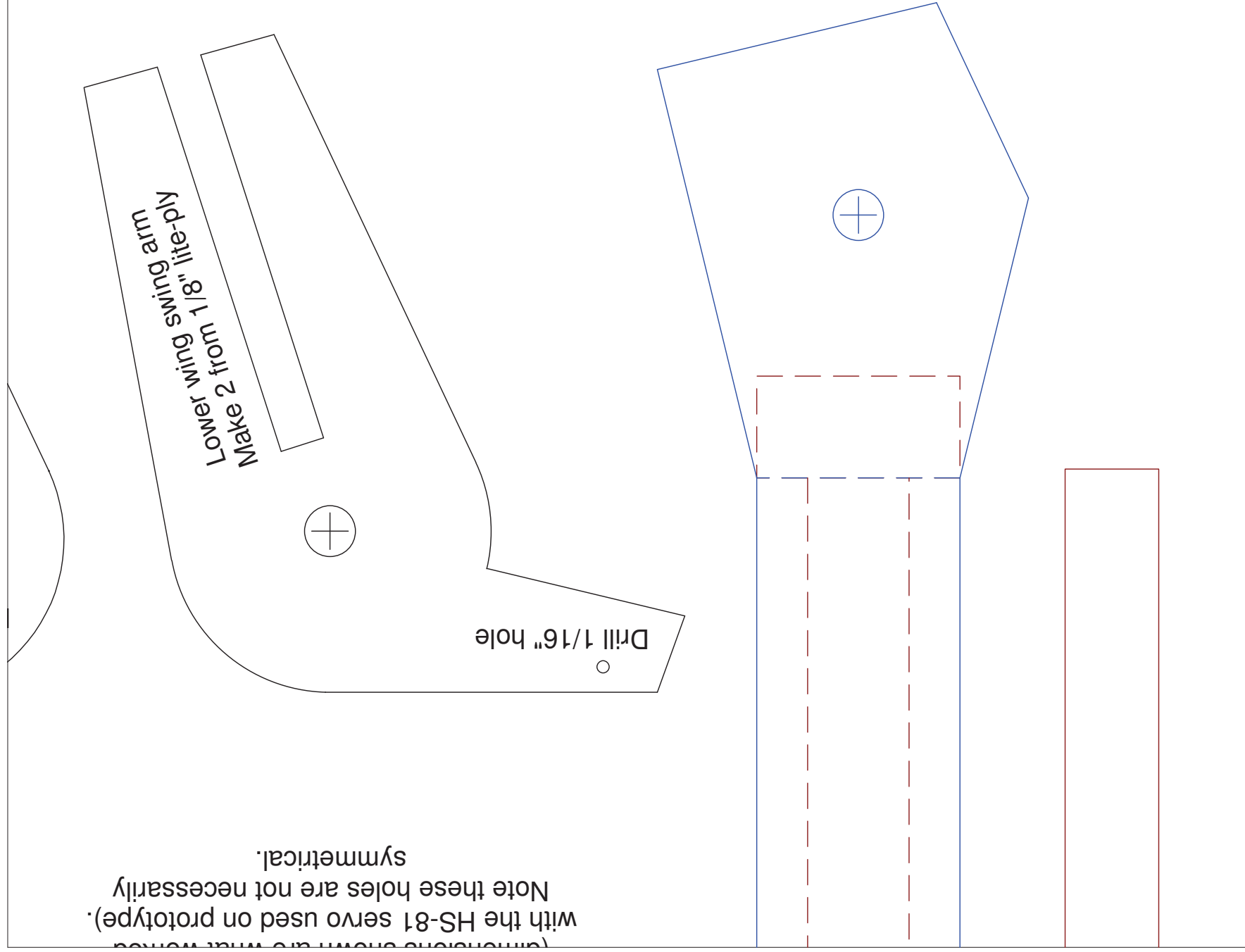
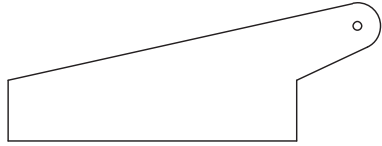


(Dimensions shown are what worked  
with the HS-81 servo used on prototype).  
Note these holes are not necessarily  
symmetrical.



(make 2 from 1/32 plywood)

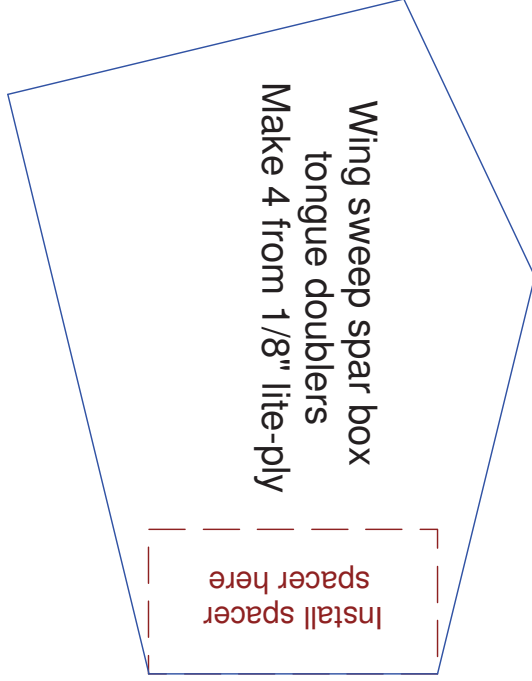


Wing swing arm spacer  
(make 4 from 1/8" lite-ply,  
laminated to make 2 pairs)  
(0.5" x 1.0")



Install spacer  
spacer here

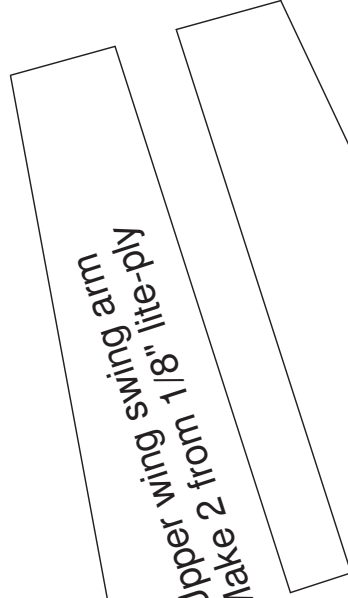
Wing sweep spar box  
tongue doublers  
Make 4 from 1/8" lite-ply



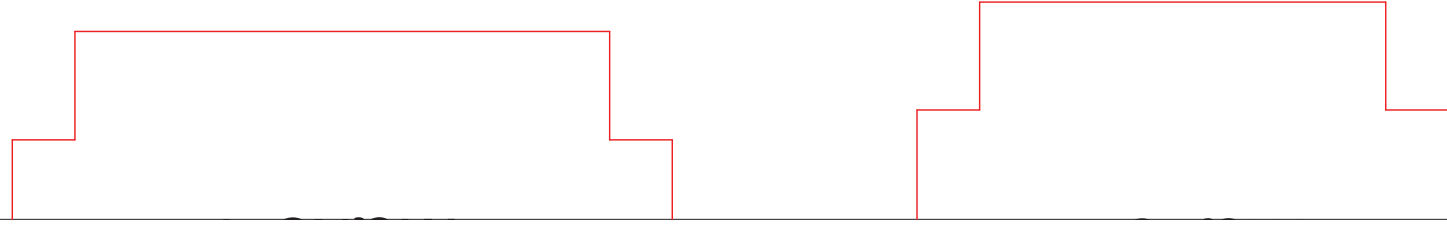
Drill 1/4" hole thru  
(after assembly)

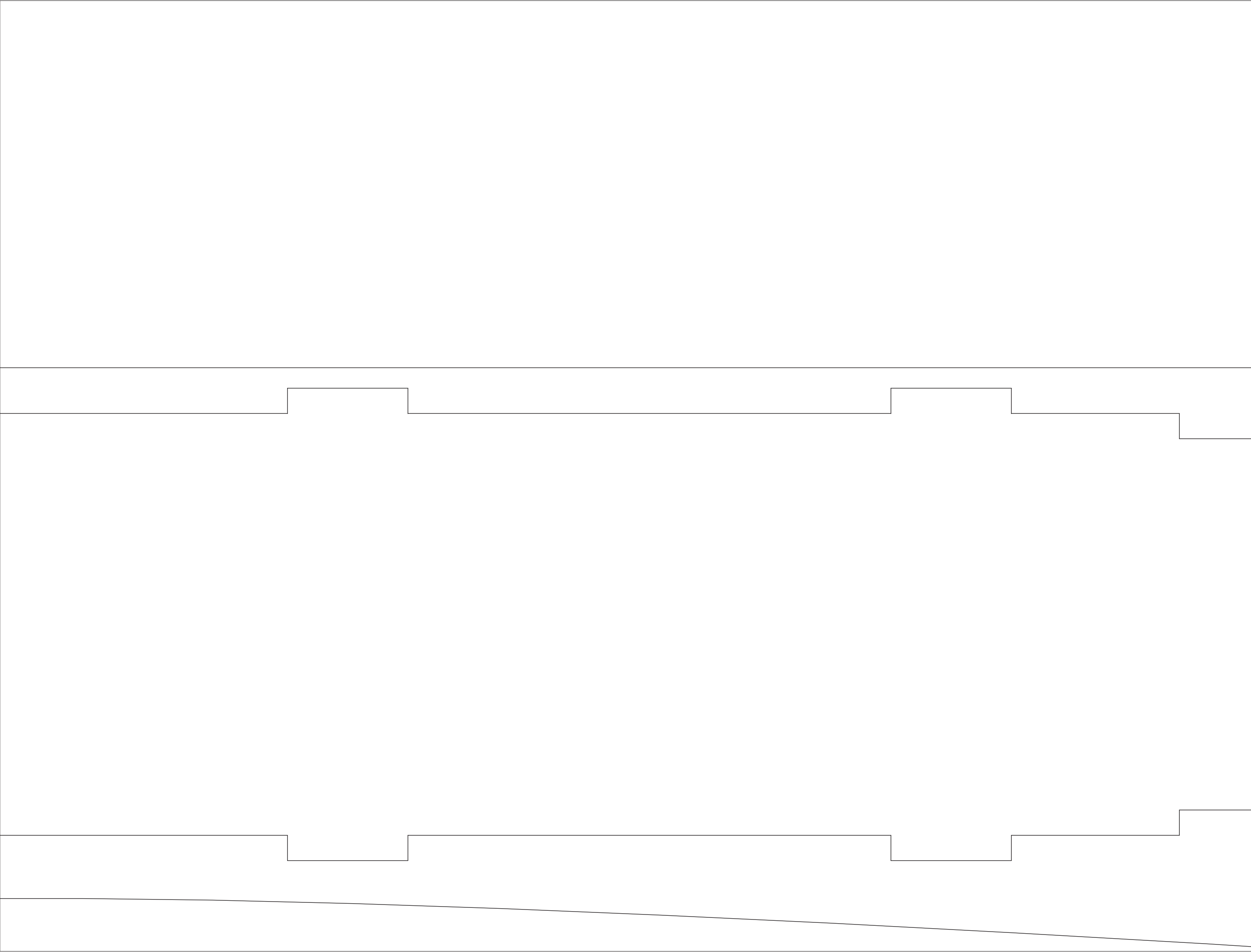


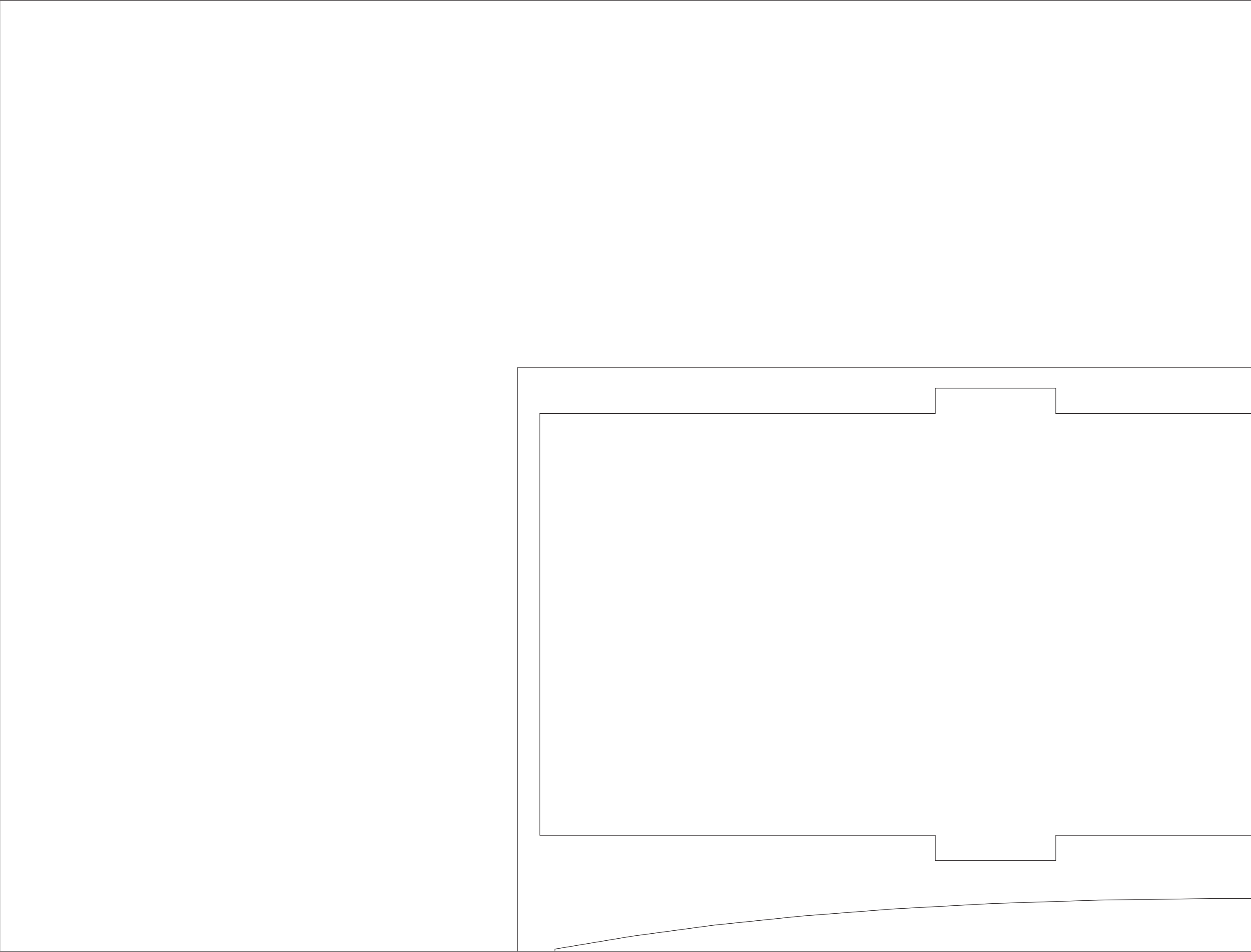
Upper wing swing arm  
Make 2 from 1/8" lite-ply

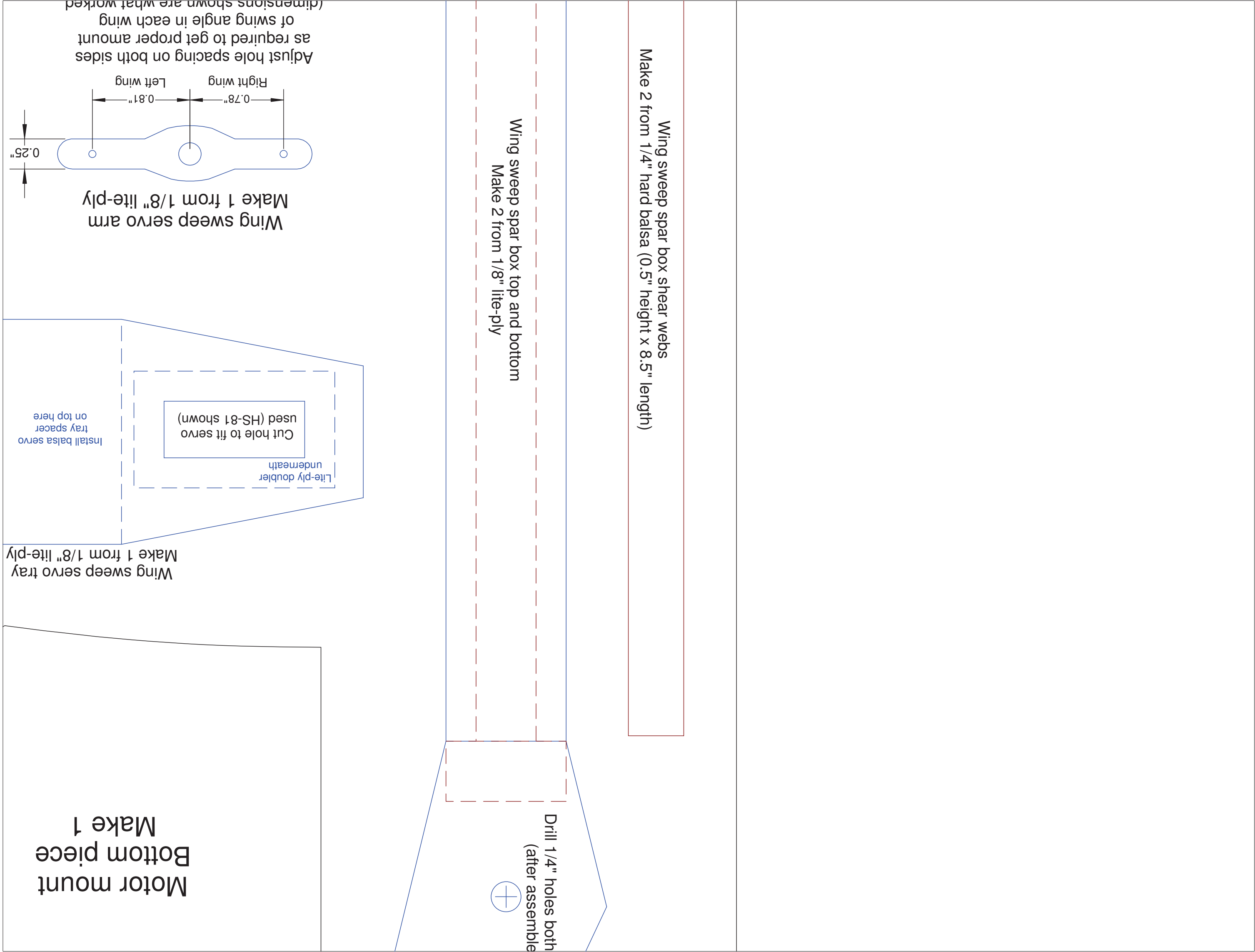


Center fuselage bottom  
Make 1









Wing sweep servo  
tray spacer  
(make 1 from 3/8" balsa)  
(1.0" x 1.87")

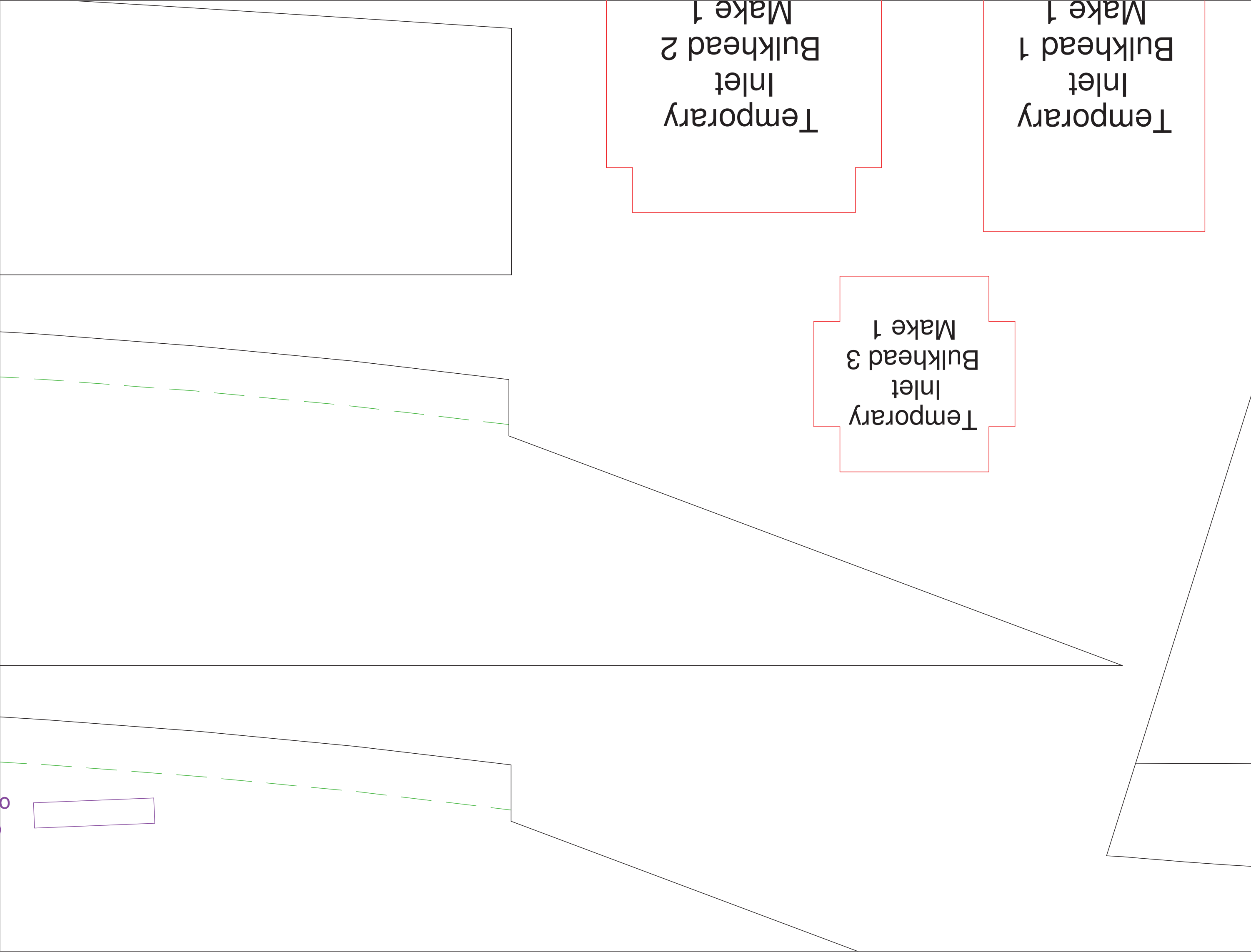
Install root fairings here  
(one on each side)

Vertical tail root fairing - Make 4

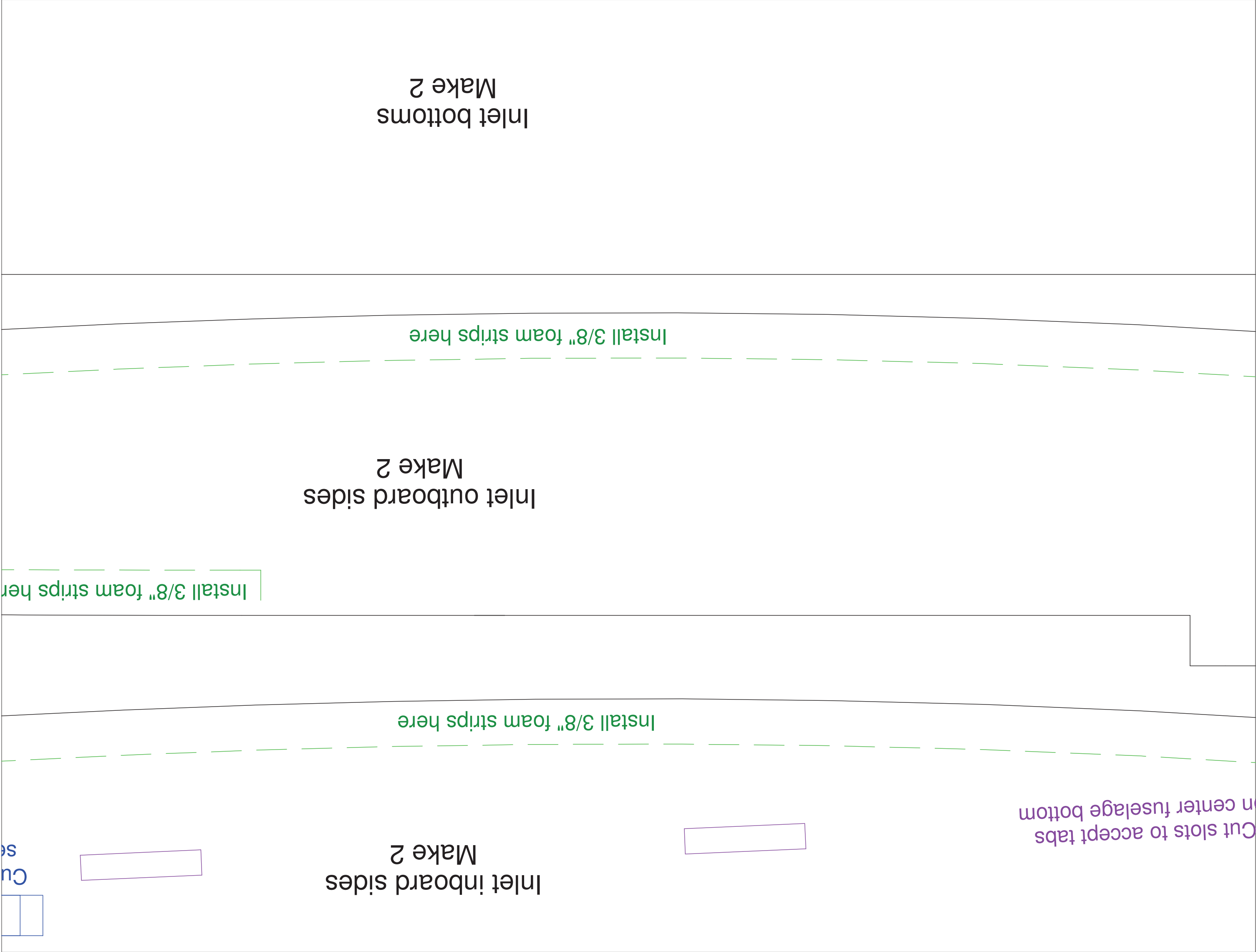
Vertical tail  
Make 2

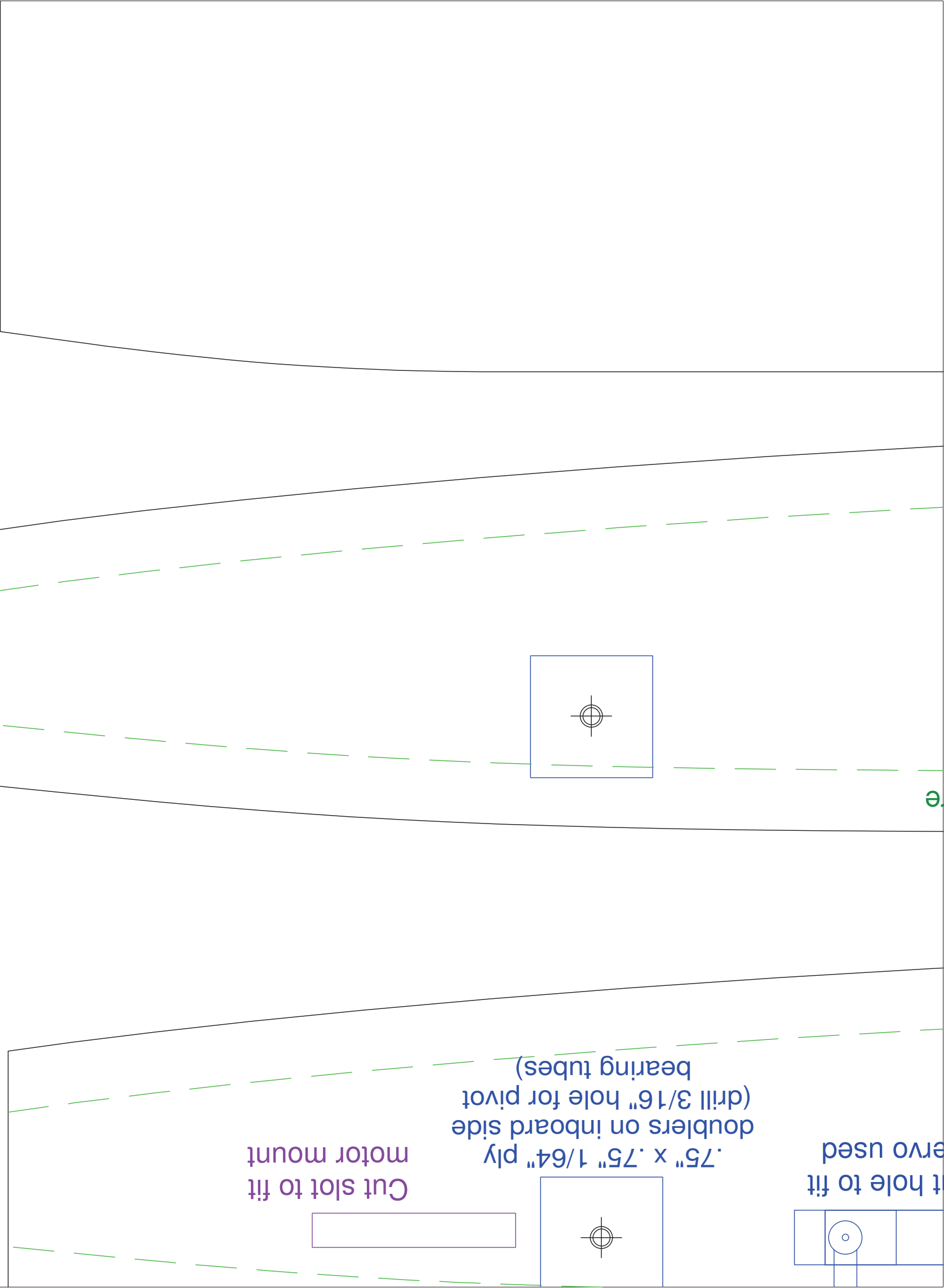
Rudder control horns

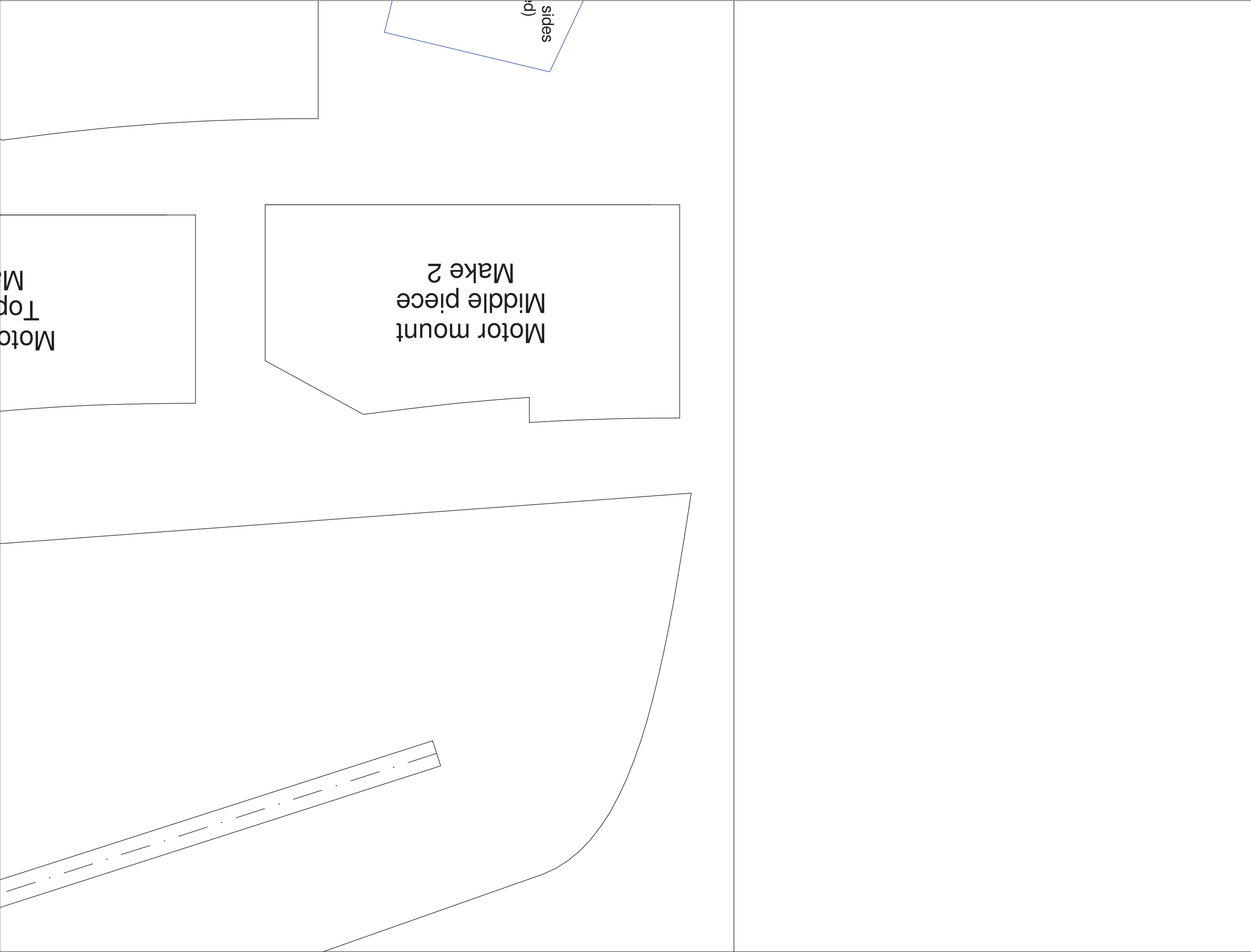
Wing sweep servo tray spacer (make 1 from 3/8" balsa) (1.0" x 1.87")









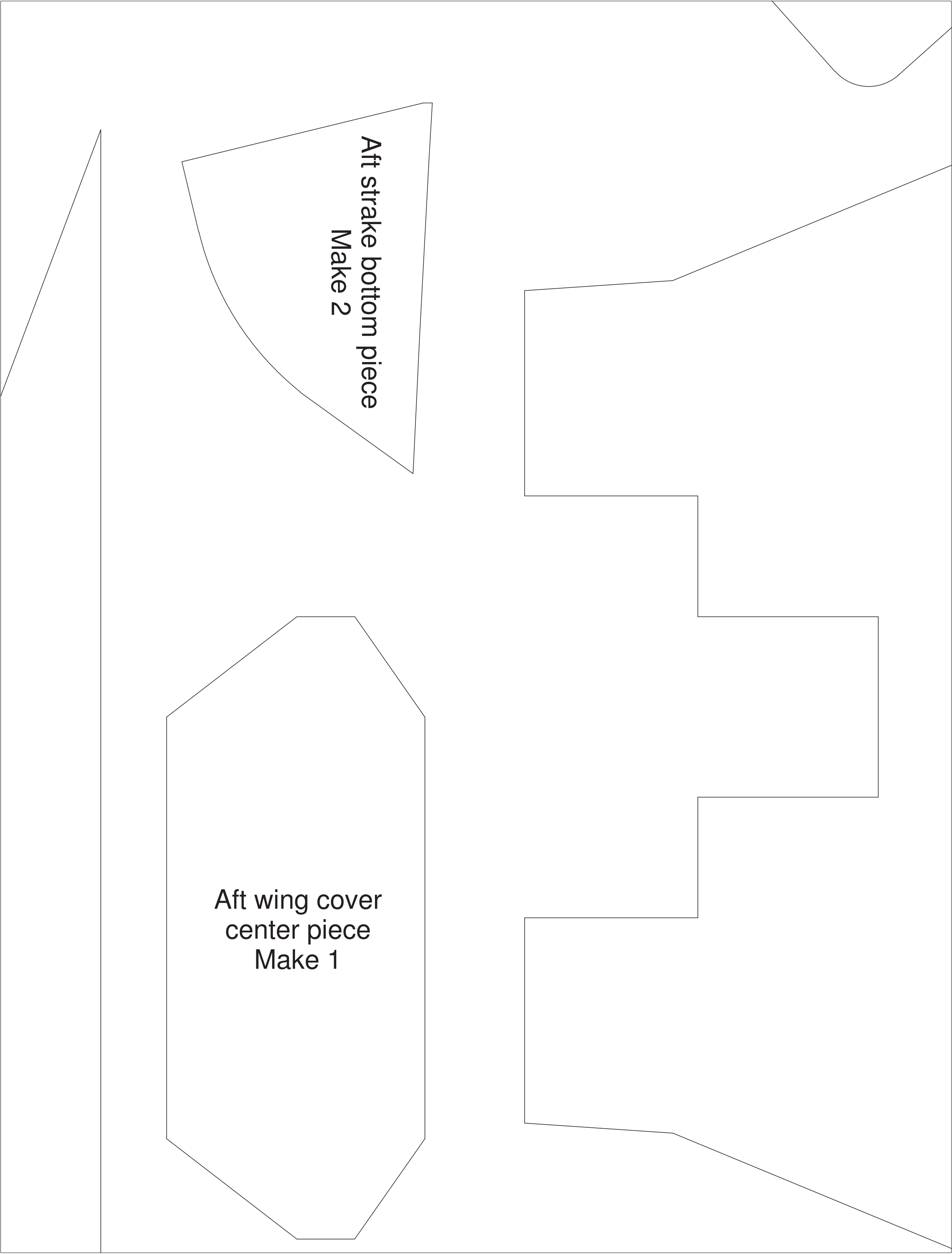


Wing panel  
Make 2

Stabilator  
Make 2

or mount  
o piece  
ake 2



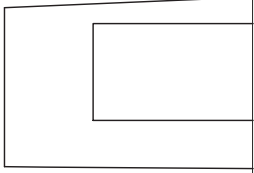


Aft strake bottom piece  
Make 2

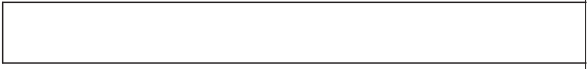
Aft wing cover  
center piece  
Make 1



ervo doubler  
ake 2

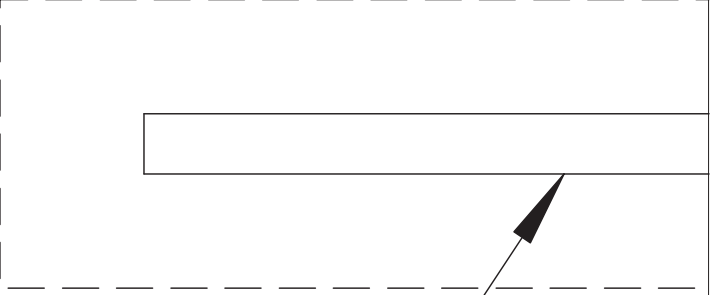


tail brace - Make 2



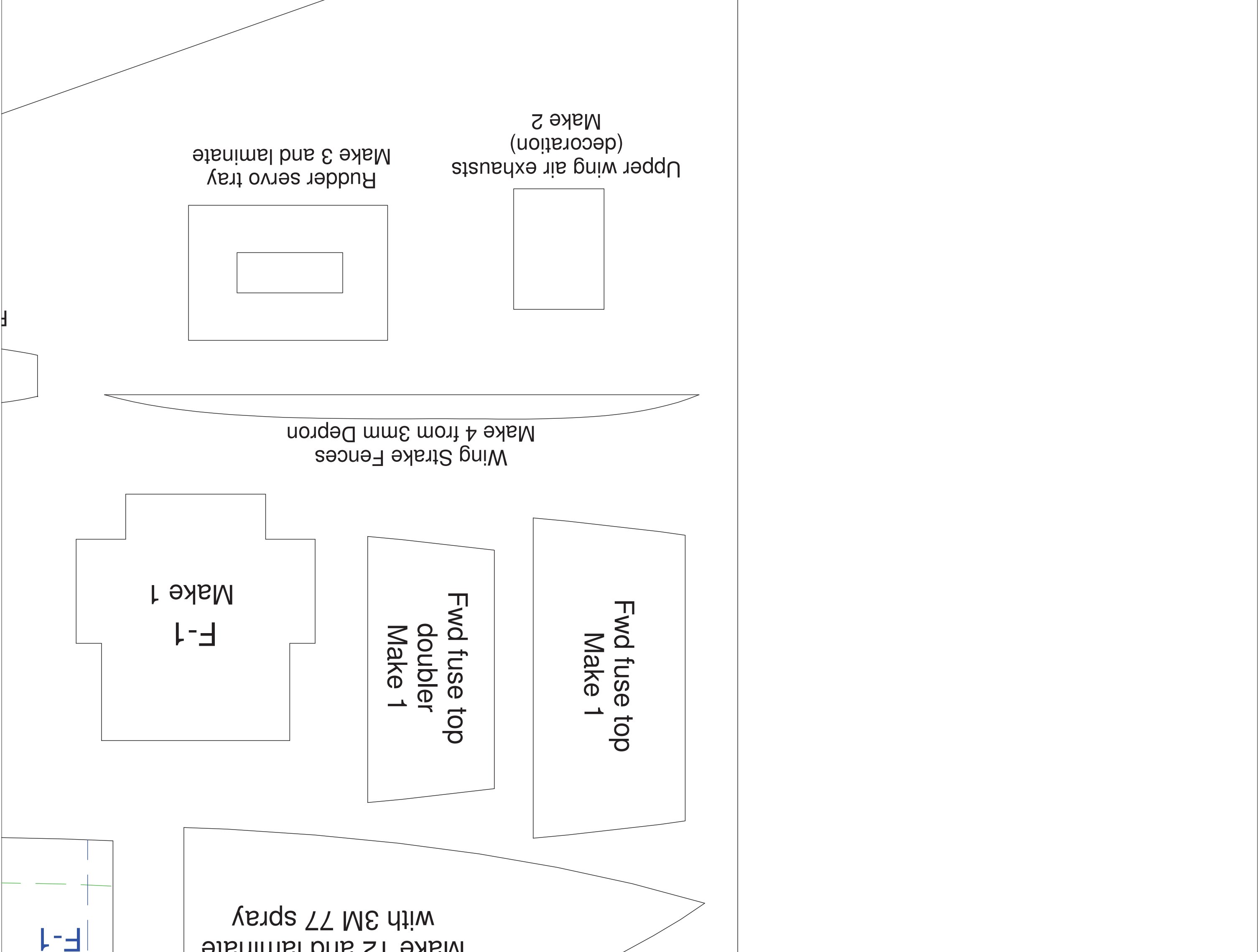
lot at 5 deg angle

Cut slot at 5 deg angle  
for vertical tails



ere







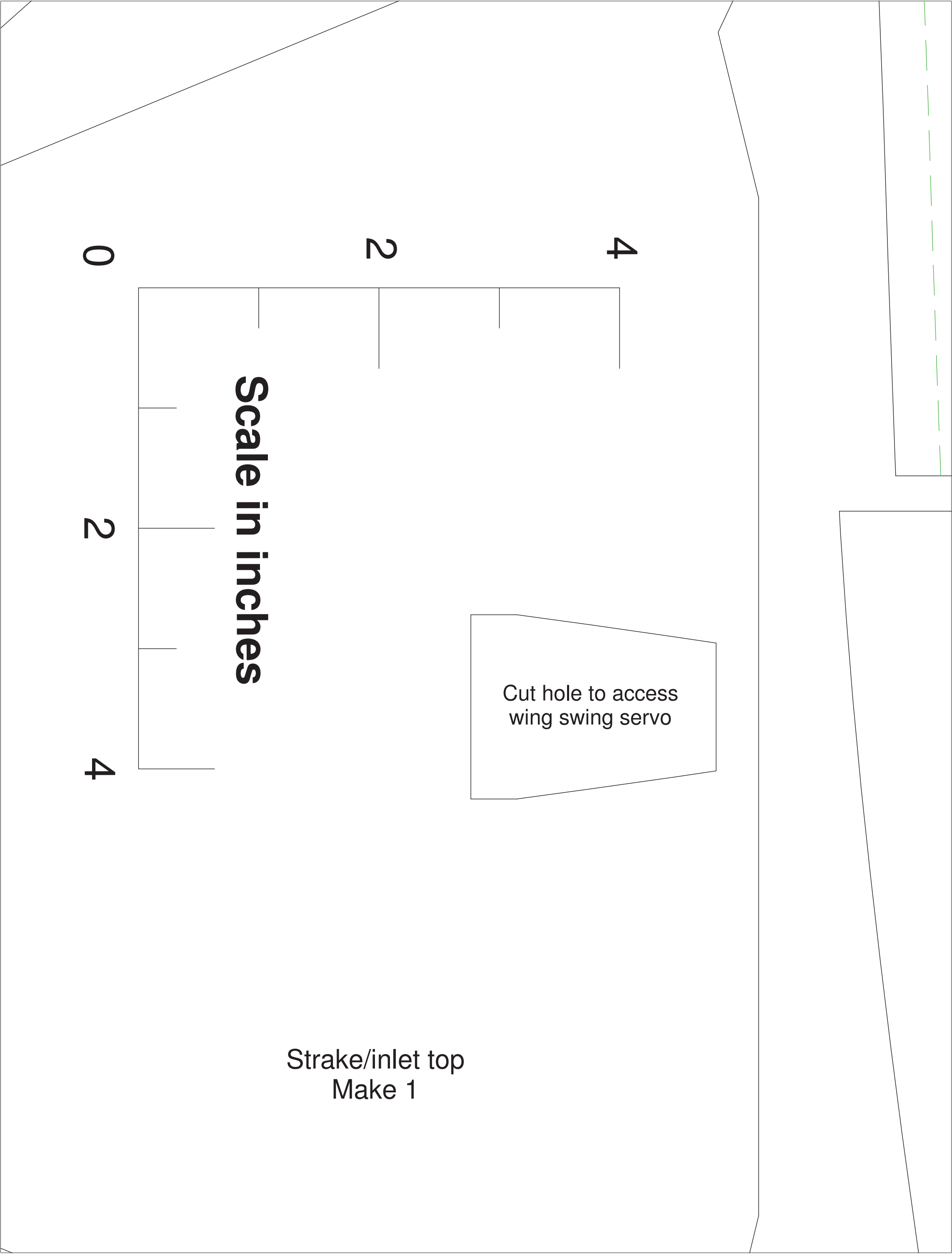


Fwd Fuselage Gun Pod  
(sand to shape)  
Make 1

F-2  
Make 1

F-3  
Make 1

Install 2 layers of 3/8" foam strip here



0

2

4

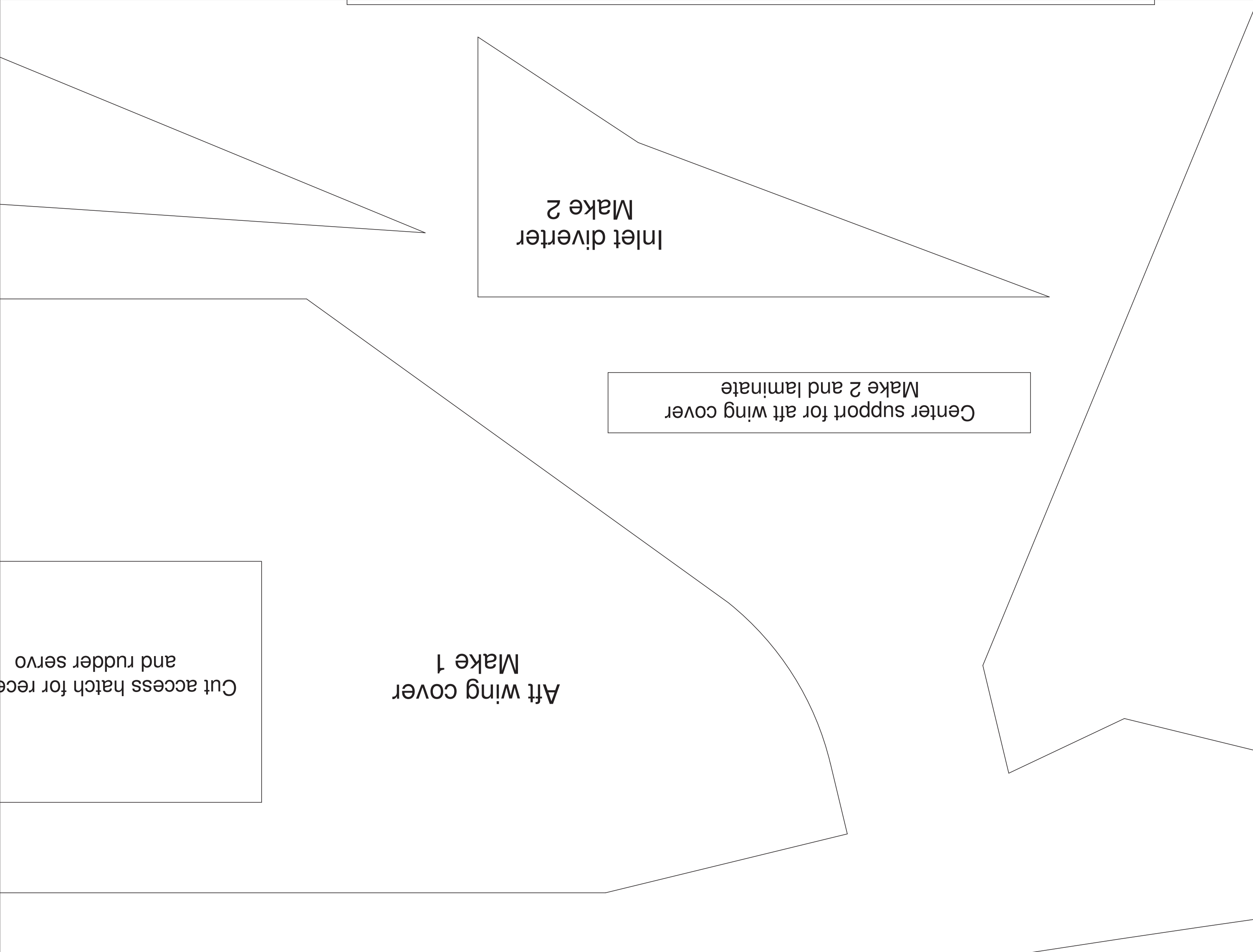
Scale in inches

2

4

Cut hole to access  
wing swing servo

Strake/inlet top  
Make 1



Fwd strake bottom piece  
Make 2

silver

Nose cone top  
view template  
(use to aid in  
carving to shape)

Nose cone

Make 10 and laminate



Install fwd fuse doubler here

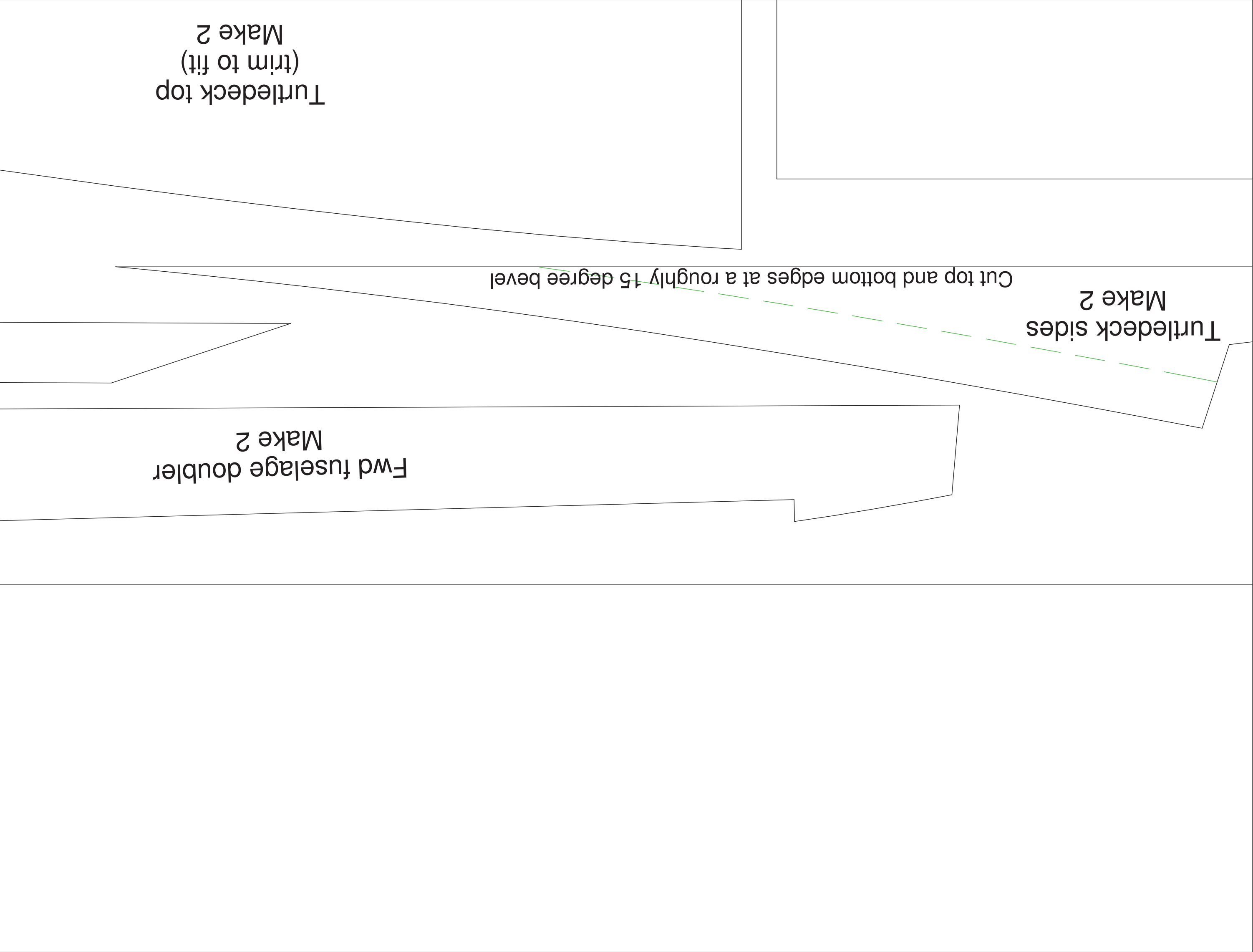
F-2

Forward fuselage sides  
Make 2

F-3

Canopy sill - Make 2

Canopy  
Make 10 and laminate  
with 3M 77 spray

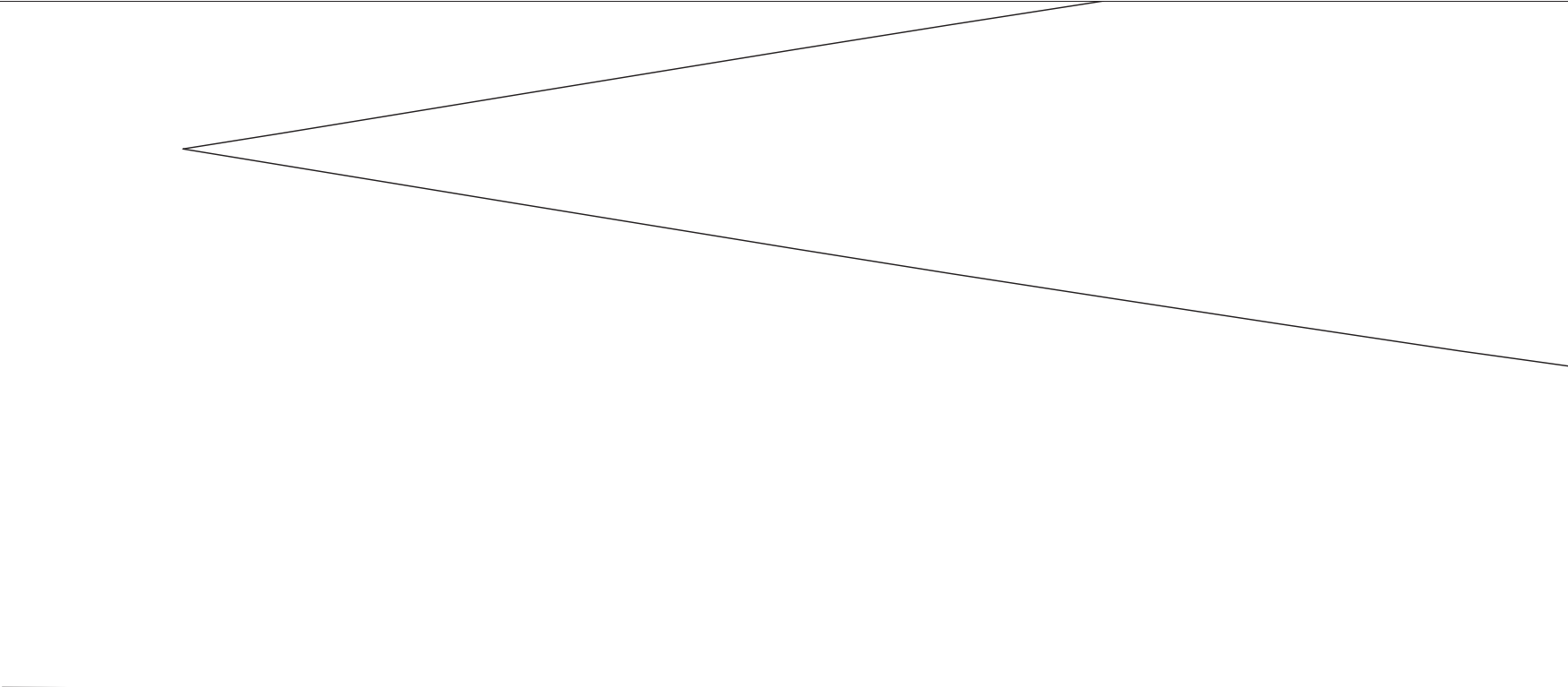
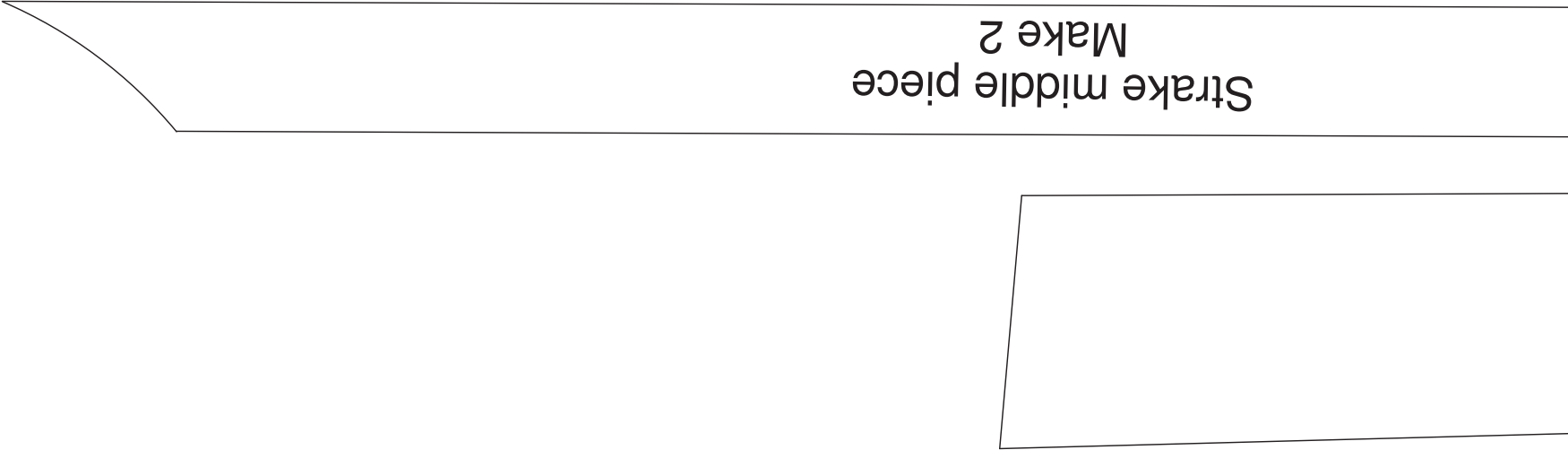


**F-14**

**Design  
Copyright**

**All parts a  
BlueCore f**

**If you enjoy these plans  
to the designer to show  
into developing them.  
be sent via PayPal to je**





<b>Tomcat Park Jet</b>	
<b>ed by Steve Shumate</b> <b>@ 2005 All Rights Reserved</b>	
<b>re made from 6 mm Depron or</b> <b>oam unless otherwise specified</b>	
<b>, please consider sending a small contribution</b> <b>w your appreciation for all the work that went</b> <b>Suggested contribution is \$10 U.S., and can</b> <b>stet44@verizon.net. Thanks for your support!</b>	